

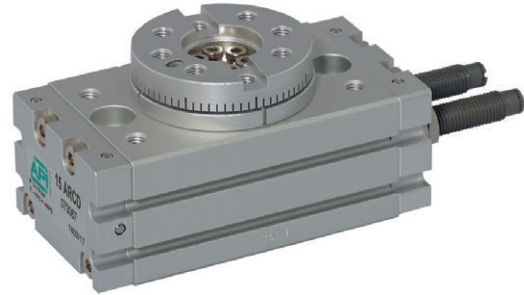
# Rotary actuators series ARC

## Bores from 10 to 63 mm

Double acting



Standard executions		
Version	Code	Item
Bore 10 mm (x2)	075581	10ARC
Bore 12 mm (x2)	075582	12ARC
Bore 15 mm (x2)	073063	15ARC
Bore 18 mm (x2)	073064	18ARC
Bore 20 mm (x2)	073065	20ARC
Bore 25 mm (x2)	073066	25ARC
Bore 28 mm (x2)	075583	28ARC
Bore 32 mm (x2)	075584 <i>New</i>	32ARC
Bore 40 mm (x2)	075585 <i>New</i>	40ARC
Bore 50 mm (x2)	075586 <i>New</i>	50ARC
Bore 63 mm (x2)	075587 <i>New</i>	63ARC



Options	Suffix
With hydraulic shock absorbers	D

### How to choose the shock absorber

Rotary actuator	Cushioning capability max (kgf.m)
15ARC	3
18ARC	6
20ARC	6
25ARC	20
28ARC	59
32ARC	59
40ARC	147
50ARC	147
63ARC	147

Series of rotary actuators with double rack with rotation angles 90°-180° and adjustment angle from 0°±90°.

They are standard magnetic provided with grooves on the body allowing the direct mounting of the magnetic reed switches. The mechanical stoppers are standard; the hydraulic shock absorbers can be supplied on request.

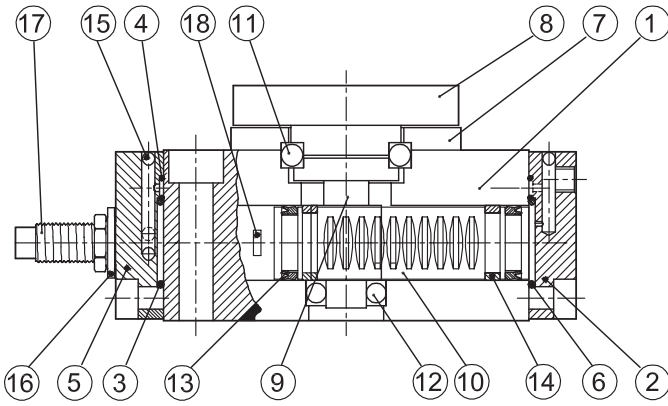
For the magnetic reed switches type ASC see from page 1.110.1

How to order: 20ARCD

20	ARC	D
Bore	Item	Option

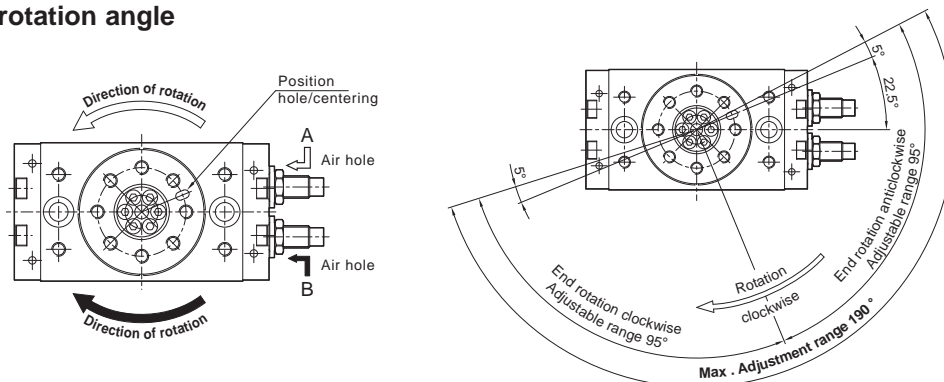
Technical data											
Type	10	12	15	18	20	25	28	32	40	50	63
Bore	Ø 10	Ø 12	Ø 15	Ø 18	Ø 20	Ø 25	Ø 28	Ø 32	Ø 40	Ø 50	Ø 63
Fluid	Compressed filtered air with or without lubrication. Lubrication, if started, must be continued.										
Pressure range	1,5 ÷ 7 bar										
Temperature range	0° C ÷ + 50° C										
Rotation angle	180°										
Adjustment angle	0° ÷ 190°										
Rotation moments (Nm) at 6 bar	0,3	0,6	1,5	2,2	3,2	5,5	7,5	9,8	19	31	45
Ports	M3		M5			1/8"					
Weight (g)	150	250	530	990	1290	2100	2890	4100	7650	8960	11170

Materials

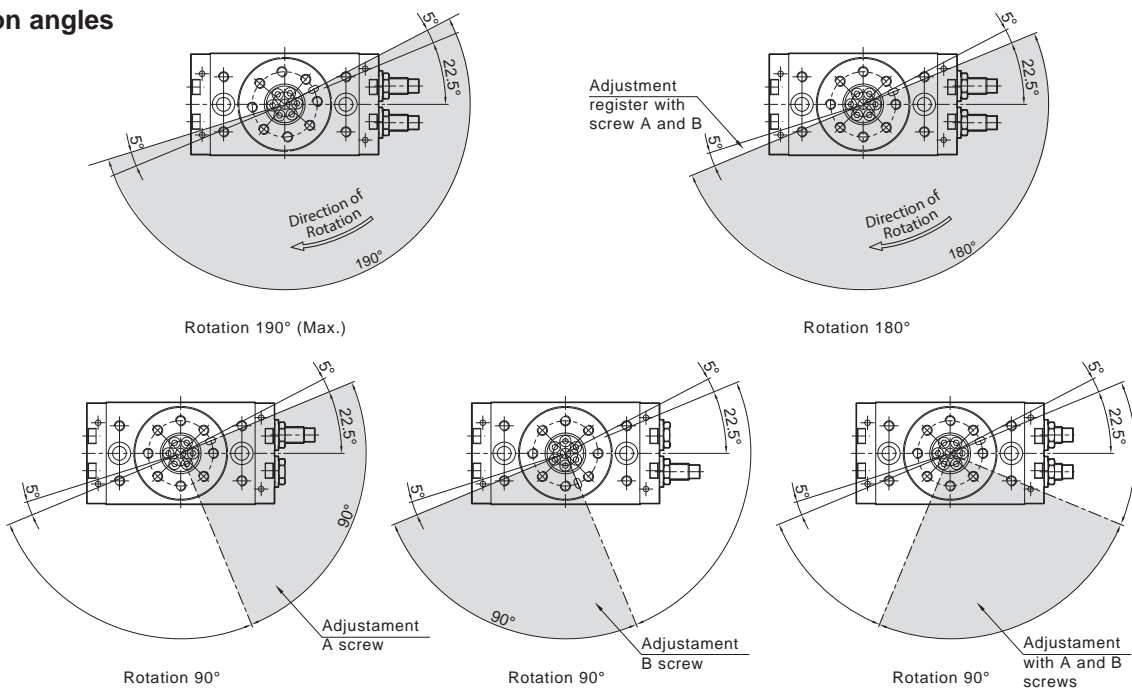


N.	Component	Material
1	Body	Anodised aluminium
2	Front head	Anodised aluminium
3	O-Ring	NBR
4	O-Ring	NBR
5	Rear head	Anodised aluminium
6	O-Ring	NBR
7	Bearings cover	Anodised aluminium
8	Rotating plate	Anodised aluminium
9	Piston rod	Hardned steel
10	Rack	Stainless steel
11	Spherical bearing	Steel
12	Spherical bearing	Steel
13	Piston seal	NBR
14	Washer	Plastic material
15	Ball	Steel alloy
16	Limit switch seal	NBR
17	Mechanical stopper	Steel alloy
18	Magnet	Metal

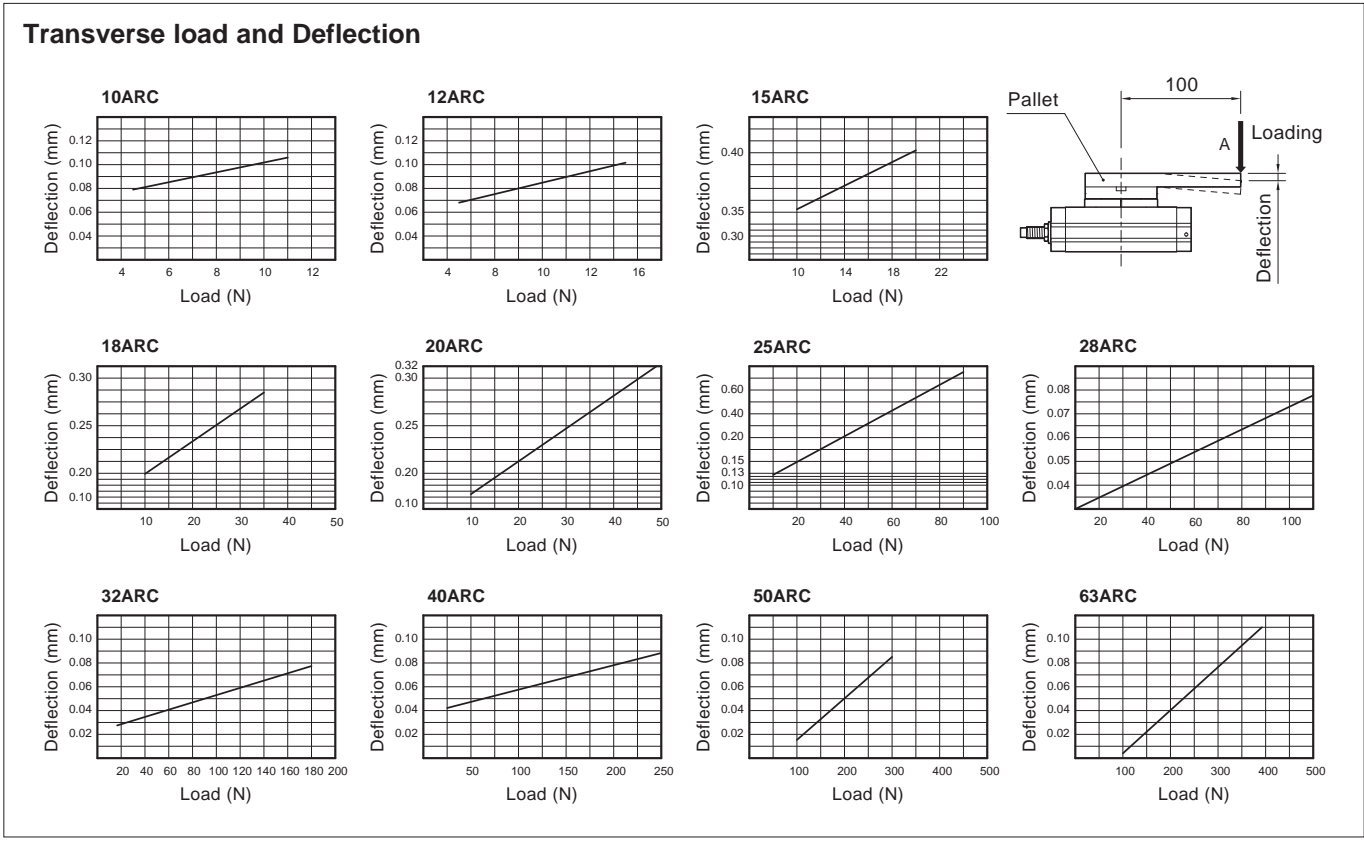
Direction and rotation angle



Rotation angles



Possible loads					
Type	Kind of loads	Type			
		Side (N)	Top (N)		Torque moment (N)
Load			(a)	(b)	
10ARC		33	48	48	1,1
12ARC		54	71	71	1,5
15ARC		70	78	74	2
18ARC		140	130	130	3,5
20ARC		185	188	358	4,8
25ARC		300	285	442	9
28ARC		333	296	476	12
32ARC		390	493	706	18
40ARC		543	740	1009	25
50ARC		850	950	1500	30
63ARC		1200	1400	2100	38



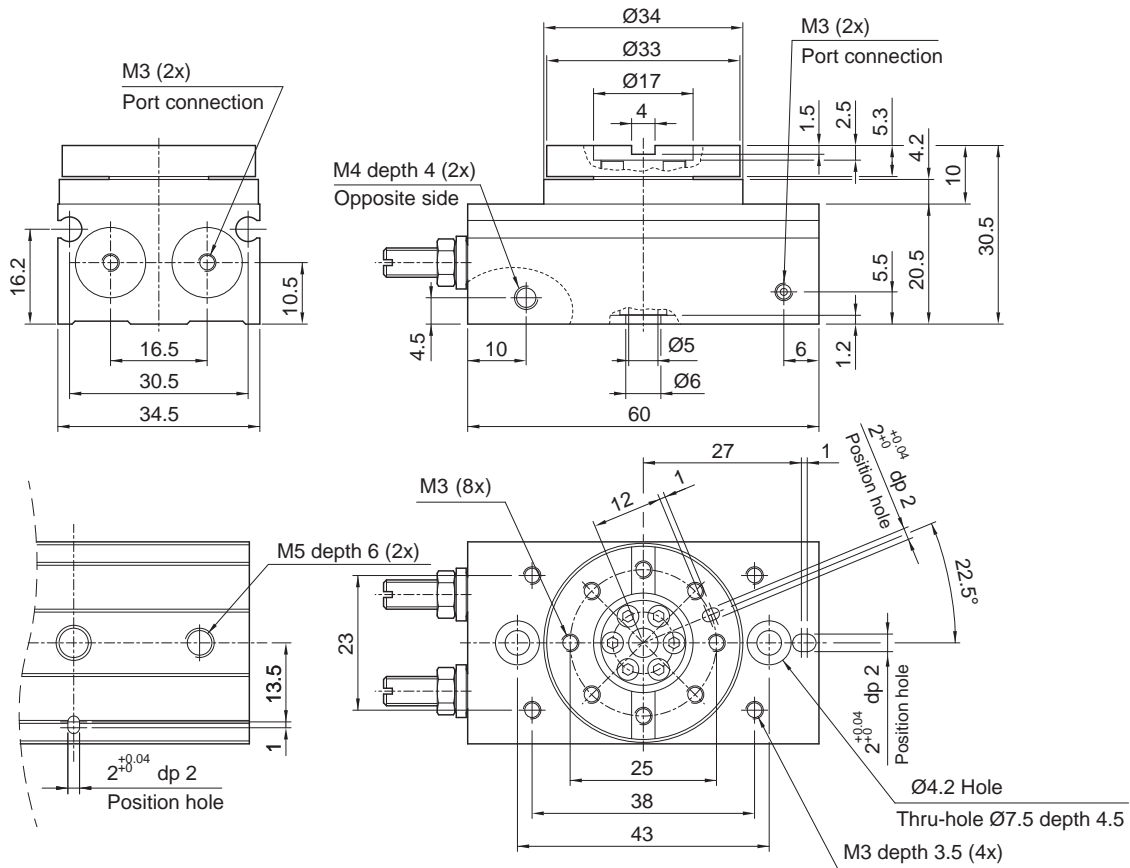
# Rotary actuators series ARC

Bores from 10 to 63 mm

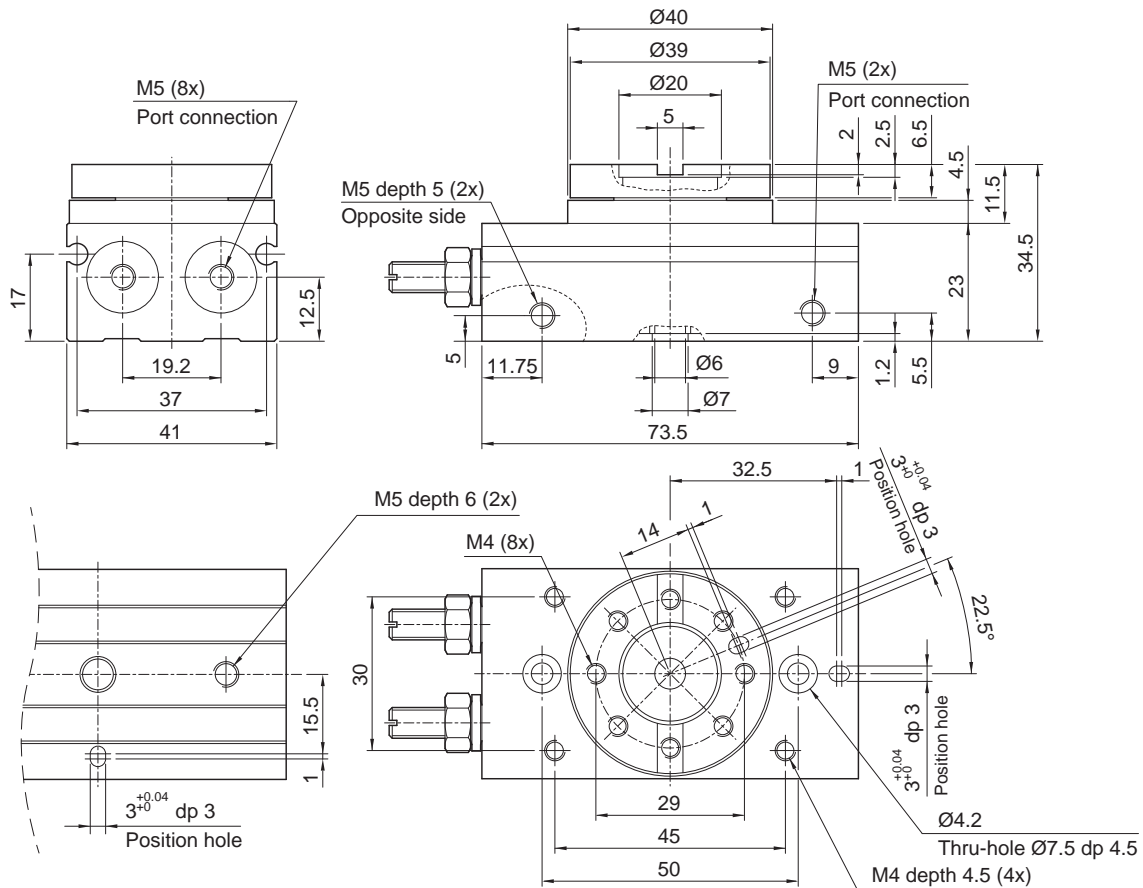
Standard dimensions



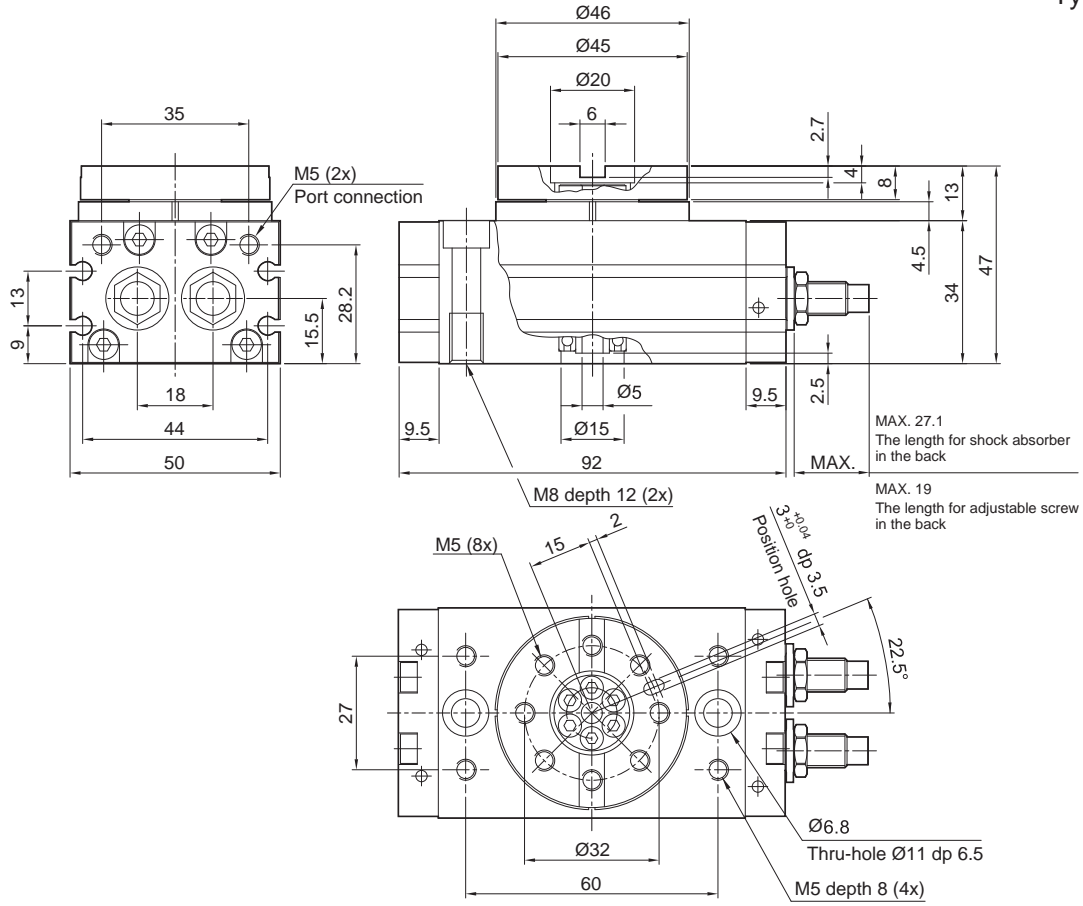
## Type: 10ARC



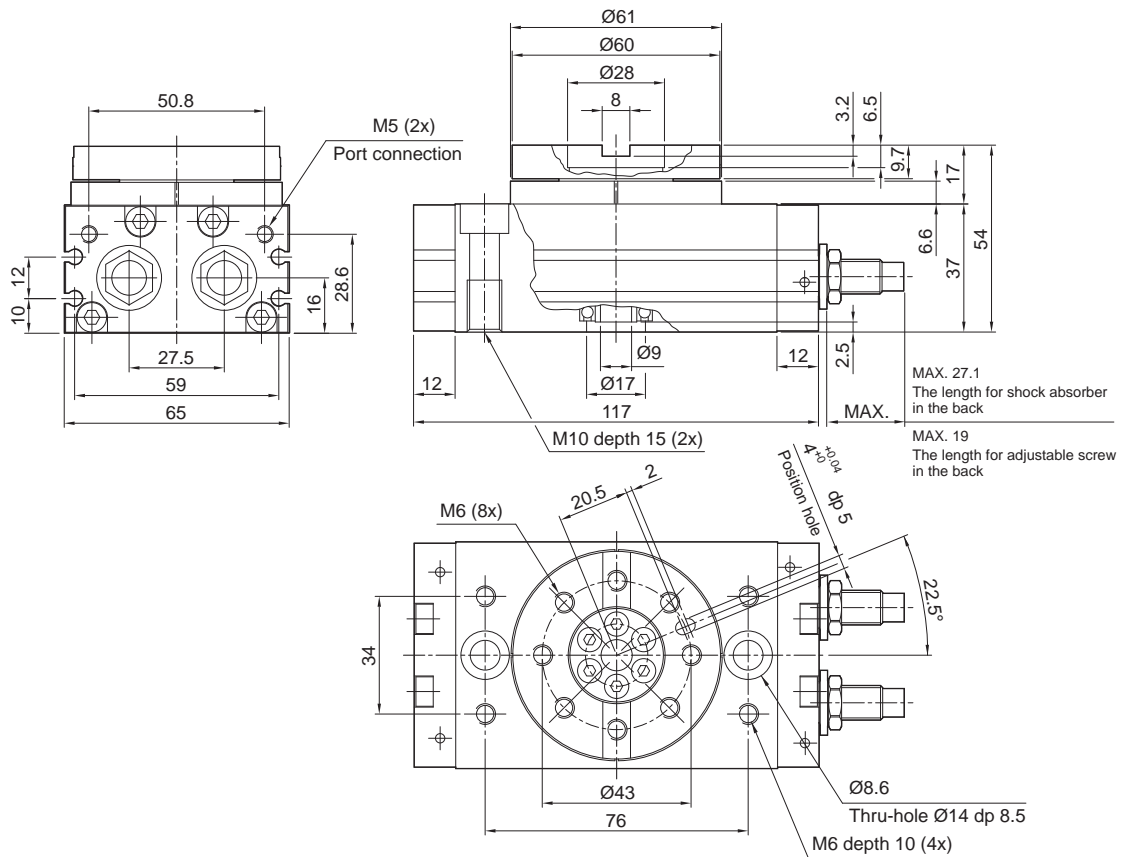
## Type: 12ARC



Type: 15ARC



Type: 18ARC



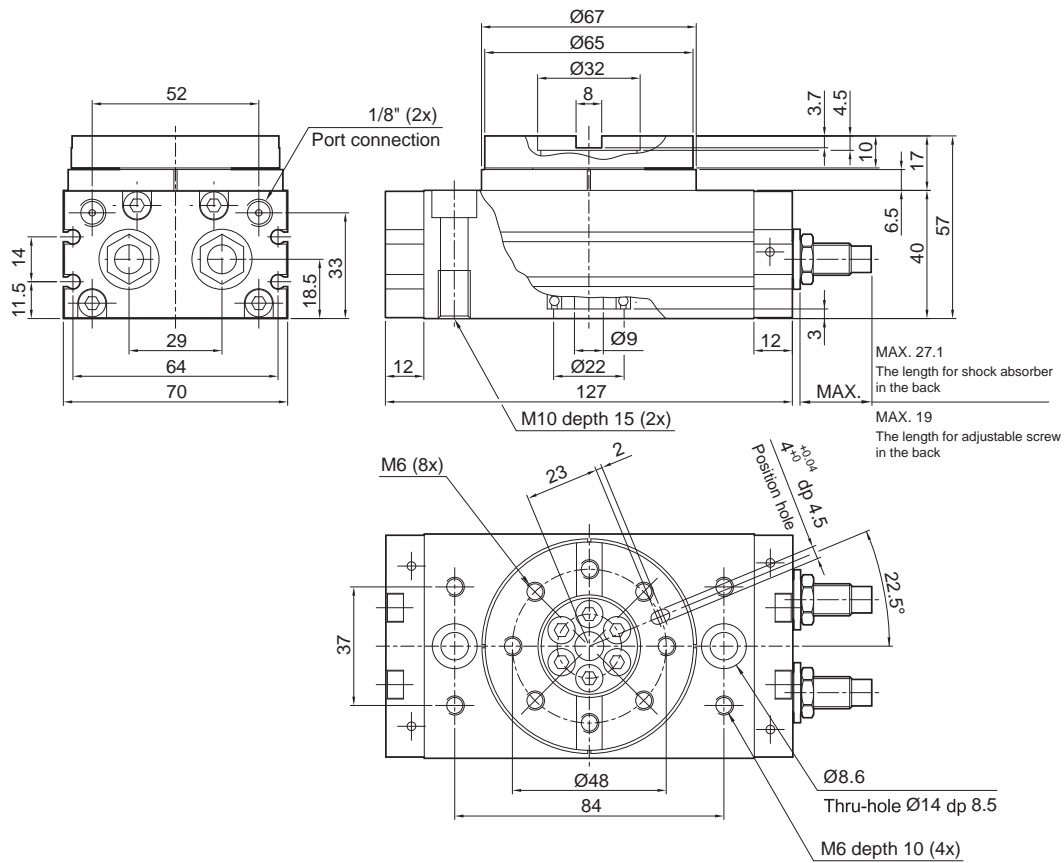
# Rotary actuators series ARC

Bores from 10 to 63 mm

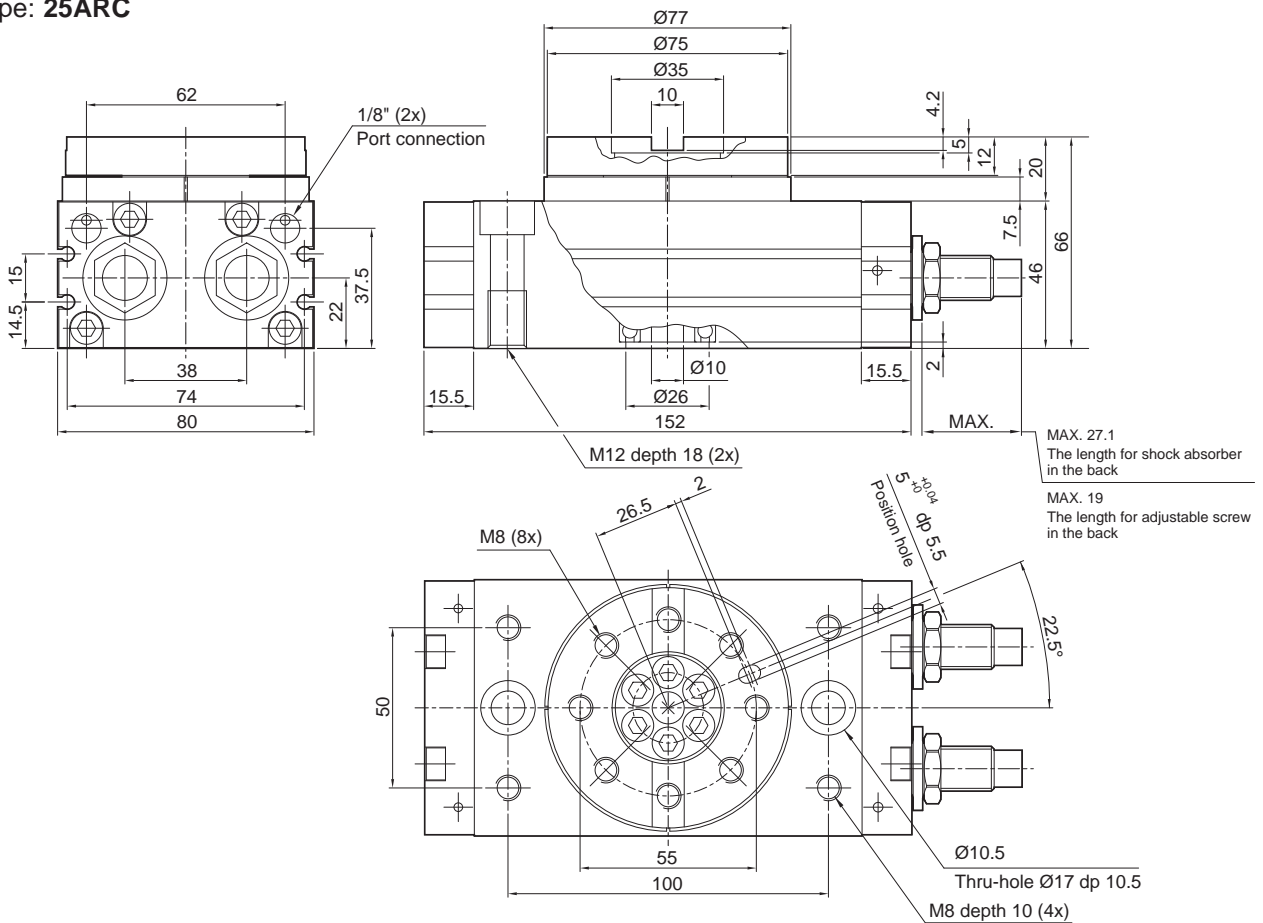
Standard dimensions



## Type: 20ARC

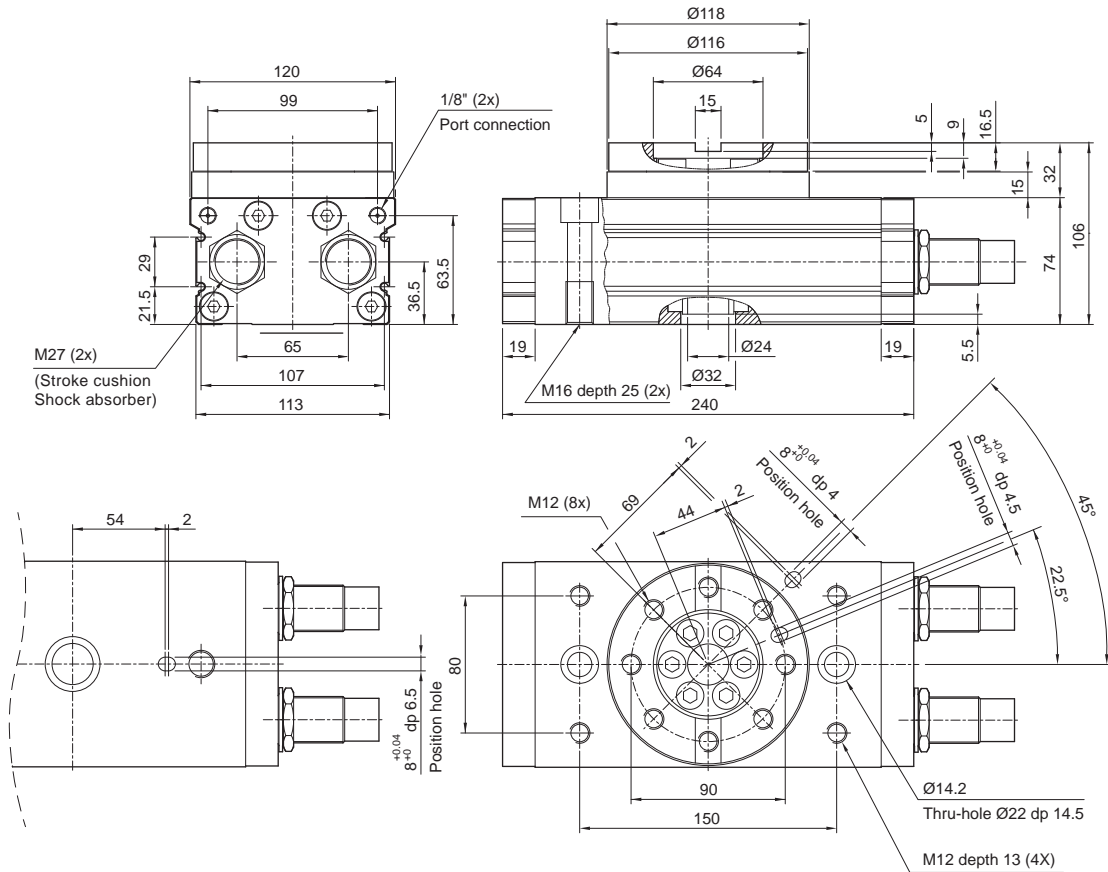


## Type: 25ARC

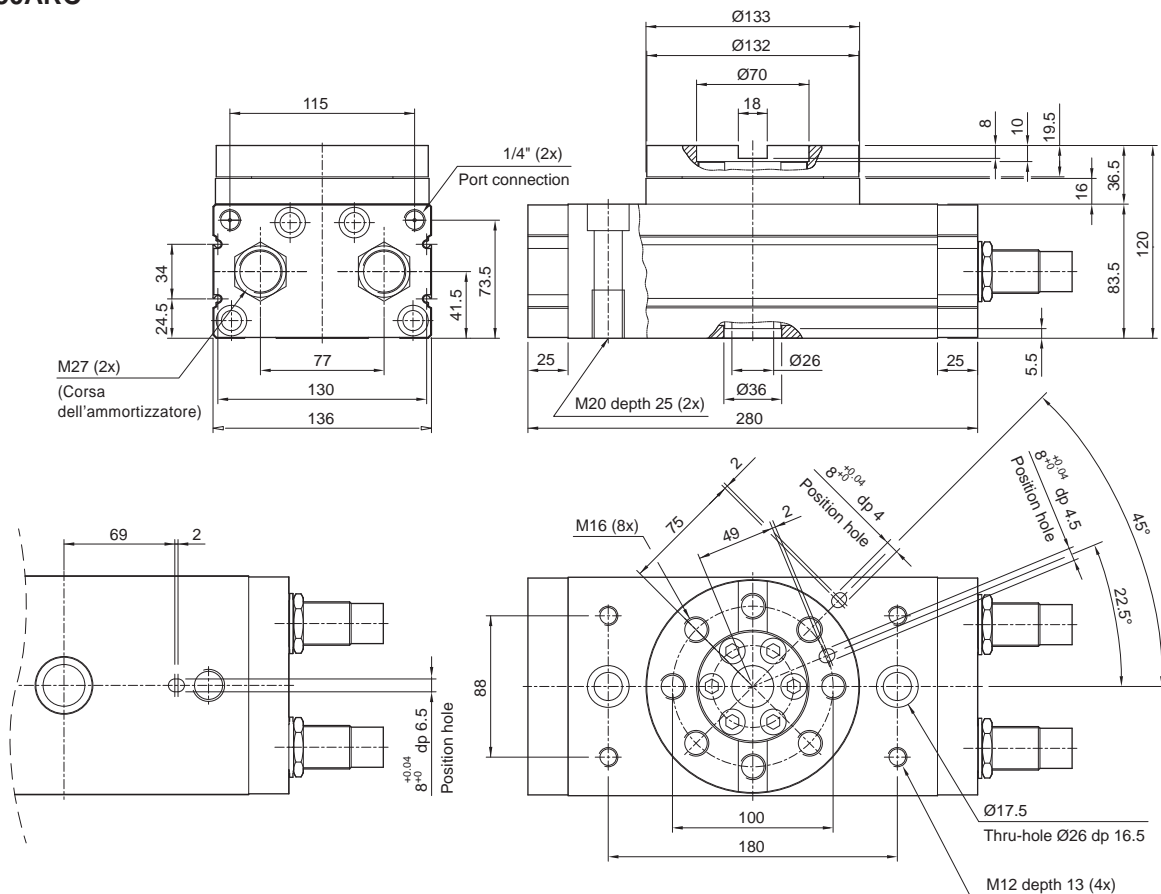




Type: **40ARC**



Type: **50ARC**



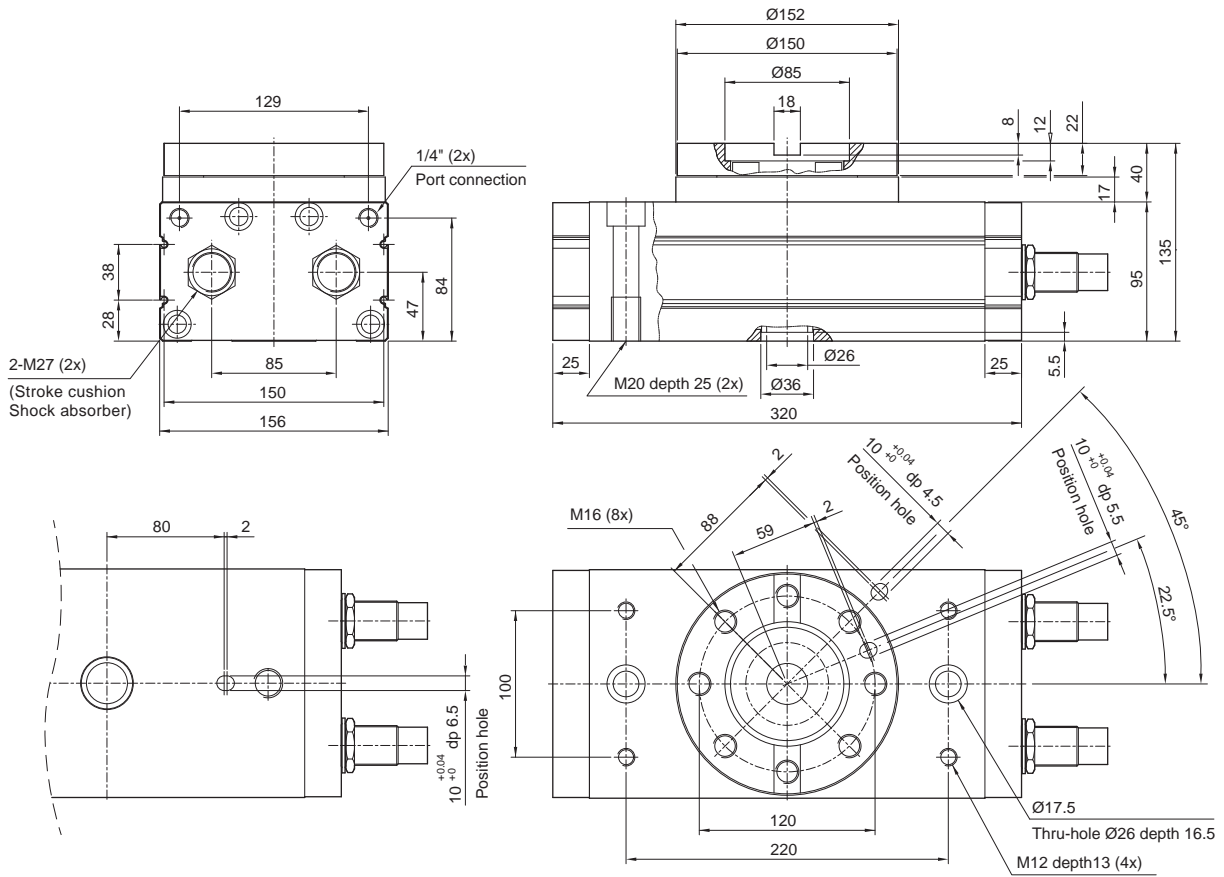


Rotary actuators series ARC  
Bores from 10 to 63 mm

Standard dimensions

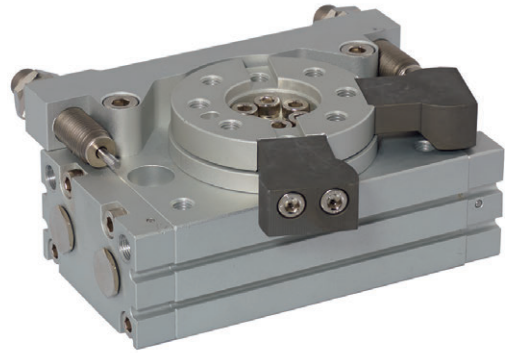


Type: 63ARC





Esecuzioni standard		
Version	Code	Item
Bore 15 mm (x2), 90°	073071	15/90ARP
Bore 18 mm (x2), 90°	073072	18/90ARP
Bore 20 mm (x2), 90°	073073	20/90ARP
Bore 25 mm (x2), 90°	073074	25/90ARP
Bore 28 mm (x2), 90°	075588 <i>New</i>	28/90ARP
Bore 32 mm (x2), 90°	075589 <i>New</i>	32/90ARP
Bore 15 mm (x2), 180°	073079	15/180ARP
Bore 18 mm (x2), 180°	073080	18/180ARP
Bore 20 mm (x2), 180°	073081	20/180ARP
Bore 25 mm (x2), 180°	073082	25/180ARP
Bore 28 mm (x2), 180°	075590 <i>New</i>	28/180ARP
Bore 32 mm (x2), 180°	075591 <i>New</i>	32/180ARP



Options	Suffix
With hydraulic shock absorbers	D

### How to choose the shock absorber

Rotary actuator	Cushioning capability max (kgf.m)
15ARP	3
18ARP	6
20ARP	6
25ARP	20
28ARP	59
32ARP	59

Series of rotary actuators with piston and external mechanical stoppers.

Rotation angles 90°-180°.

They are standard magnetic provided with grooves on the body allowing the direct mounting of the magnetic reed switches.

The mechanical stoppers are standard; the hydraulic shock absorbers can be supplied on request.

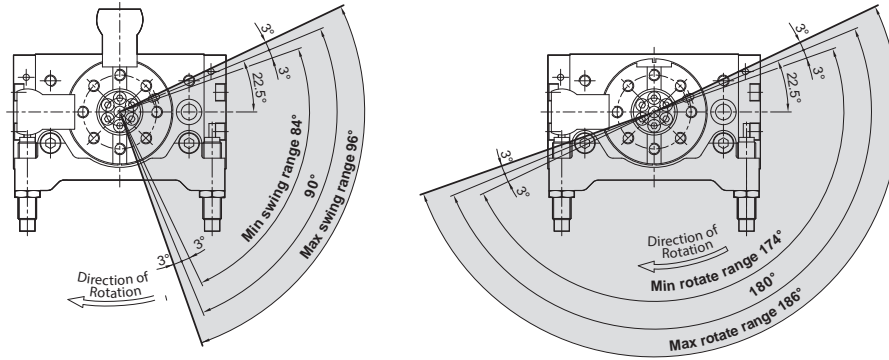
For the magnetic reed switches type ASC see from page 1.110.1

How to order: 20ARCD

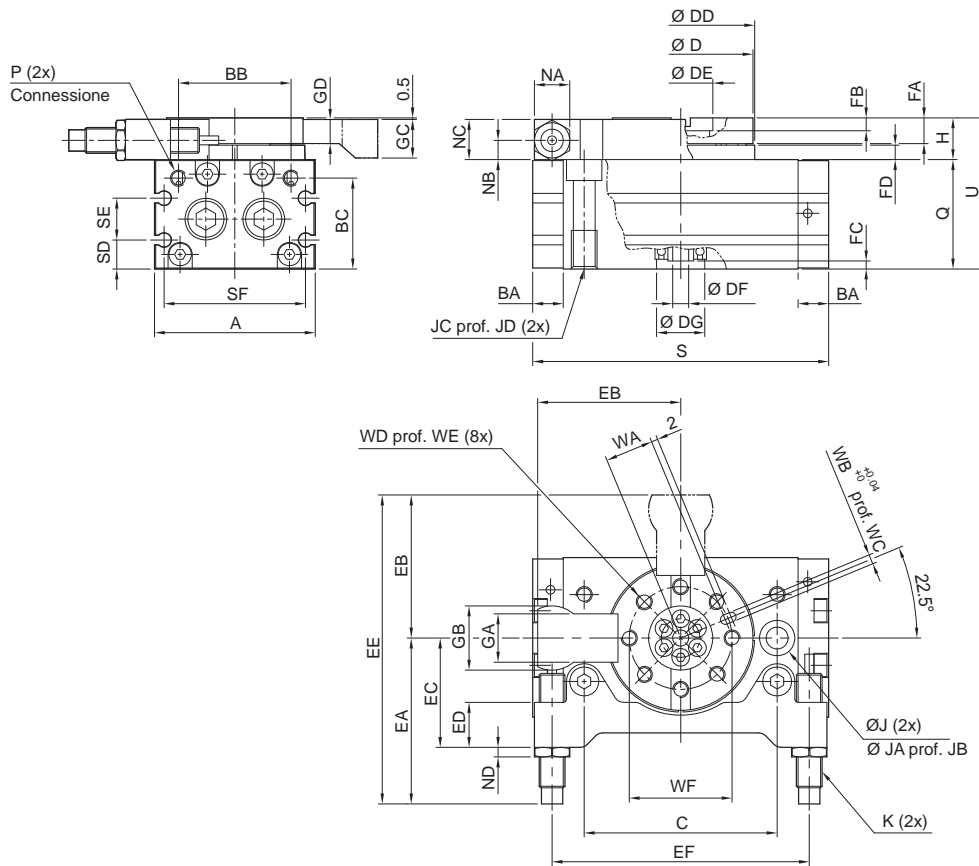
20	/	90	ARP	D
Bore	/	Rotation	Item	Option

Technical data							
Type	15	18	20	25	28	32	
Bore	Ø 15	Ø 18	Ø 20	Ø 25	Ø 28	Ø 32	
Fluid	Compressed filtered air with or without lubrication. Lubrication, if started, must be continued.						
Pressure range	1,5 ÷ 7 bar						
Temperature range	0° C ÷ + 50° C						
Rotation angle	90° - 180°						
Adjustment angle	10°						
Rotation moments (Nm) at 6 bar	1,5	2,2	3,2	5,5	7,5	9,8	
Ports	M5			1/8"			
Weight (g)	90°	630	1200	1520	2480	3390	4700
	180°	600	1140	1450	2370	3210	4500

Rotation angles



Dimensions



Type	A	BA	BB	BC	C	D	DD	DE	DF	DG	EA	EB	EC	ED	EE	EF	FA	FB	FC	FD	GA	GB	GC	GD	H
15ARP	50	9,5	35	28,2	60	45	46	20	5	15	51,6	44,5	34	14	96,1	80	8	4	2,5	4,5	15	20	12	7,5	13
18ARP	65	12	50,8	28,6	76	60	61	28	9	17	56	57	43	18	113	101	9,7	6,5	2,5	6,6	19	25	9	9,2	17
20ARP	70	12	52	33	84	65	67	32	9	22	59	62	46	18	121	110	10	4,5	3	6,5	20	28	16	9,5	17
25ARP	80	15,5	62	37,5	100	75	77	35	10	26	85	73	55	20	158	131	12	5	2	7,5	25	35	18	11,5	20
28ARP	92	17	70	46,7	110	88	90	46	16	22	86	81	55,5	35	167	141	12,5	5	4	9	28	38	19,5	11,5	22
32ARP	102	14	82	50,3	130	98	100	56	19	24	94	92,5	60	35	186,5	163	14,5	6	4	12	33	42	24,5	13,5	27

Type	J	JA	JB	JC	JD	K	NA	NB	NC	ND	P	Q	S	SD	SE	SF	U	WA	WB	WC	WD	WE	WF
15ARP	6,8	11	6,5	M8x1,25	12	M8x1	11	6	12,5	3	M5x0,8	34	92	9	13	44	47	15	3	3,5	M5x0,8	8	32
18ARP	8,6	14	8,5	M10x1,5	15	M10x1	12,7	7,5	16,5	3	M5x0,8	37	117	10	12	59	54	20,5	4	5	M6x1	10	43
20ARP	8,6	14	8,5	M10x1,5	15	M10x1	12,7	8,5	16,5	3	RC 1/8	40	127	11,5	14	64	57	23	4	4,5	M6x1	10	48
25ARP	10,5	17	10,5	M12x1,75	18	M14x1,5	19	8,5	19,5	5	RC 1/8	46	152	14,5	15	74	66	26,5	5	5,5	M8x1,25	10	55
28ARP	10,5	17	10,5	M12x1,75	18	M14x1,5	19	10	21,5	5	RC 1/8	53	170	14,5	24	78	75	32,5	5	5,5	M8x1,25	12,5	67
32ARP	10,5	17	10,5	M12x1,75	18	M20x1,5	26	11,5	26	7	RC 1/8	59	189	16	27	89	86	37,5	6	6,5	M10x1,5	14,5	77